

## EGFR (L858R)

**Catalog Number:** 26082

**Gene Symbol:** EGFR/HER1/ERBB1

**Description:** Anti-EGFR (L858R) Mouse Monoclonal Antibody

**Background:** EGFR is a receptor tyrosine kinase binding ligands of the EGF family and activating several signaling cascades to convert extracellular cues into appropriate cellular responses. It activates at least 4 major downstream signaling cascades including the RAS-RAF-MEK-ERK, PI3 kinase-AKT, PLCgamma-PKC and STATs modules. Defects in EGFR are associated with lung cancer (LNCR).

**Immunogen:** A synthetic peptide from the internal region of EGFR which includes the mutation of L858R, human origin.

**Tested applications:** ELISA, WB, IF, IHC

**Recommended dilutions:**

ELISA: 1:1000-1:5000

WB: 1:1000-1:5000

IHC: 1:50-1:100

**Concentration:** 1 mg/ml

**Host:** Mouse

**Clonality:** Monoclonal

**Purity:** Purified from ascites

**Format:** Liquid

**Storage buffer:**

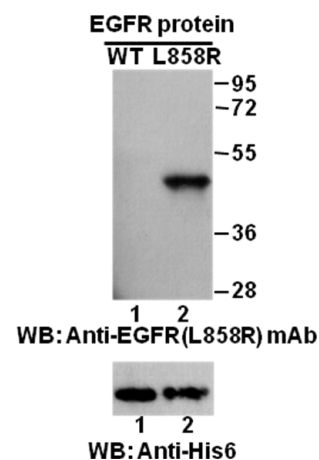
Preservative: no

Constituents: PBS (without  $Mg^{2+}$  and  $Ca^{2+}$ ), pH 7.4, 150 mM NaCl, 50% glycerol

**Species Reactivity:** Recognizes EGFR (L858R), but not wild type EGFR from vertebrates.

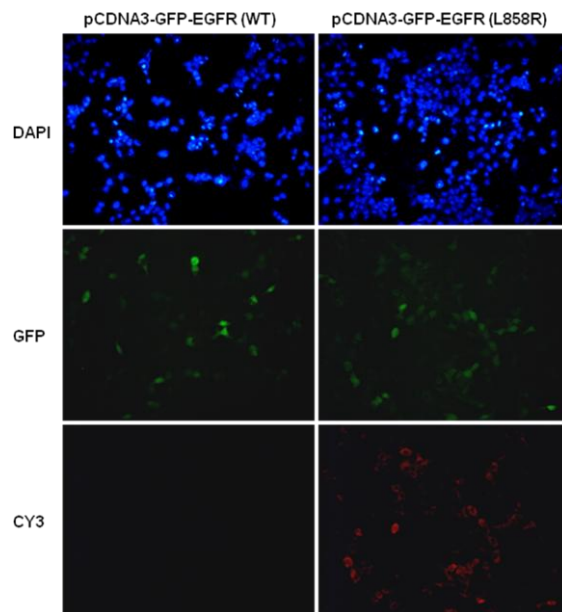
**Storage Conditions:** Store at  $-20^{\circ}C$ . Avoid freeze / thaw cycles.

### Western blot:



**Western blot analysis of recombinant EGFR (L858R) and wildtype proteins.** Purified His-tagged EGFR (L858R) protein (amino acid 702-987, lane 2, Cat. # 10230) and corresponding wild type protein (lane 1, Cat. # 10210) were blotted with anti-EGFR (L858R) mouse monoclonal antibody (Cat. # 26082). Proteins loading (bottom) were blotted with anti-His-tag monoclonal antibody (Cat. #28004).

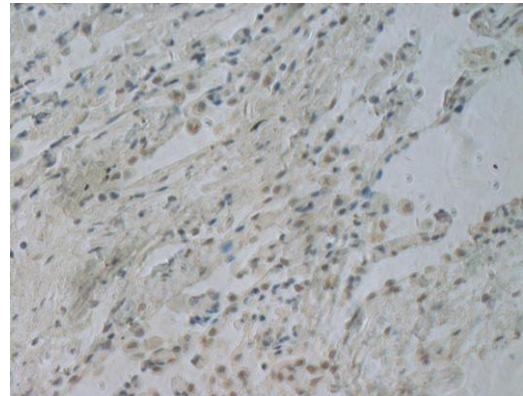
### Immunofluorescence:



### Immunofluorescence of cells expressing EGFR proteins with anti-EGFR (L858R) antibody.

HEK293T cells were transfected with pCDNA3-GFP-EGFR (WT) plasmid (left column) or pCDNA3-GFP-EGFR (L858R) plasmid (right column), then fixed and stained with anti-EGFR (L858R) monoclonal antibody (Cat. #26082).

### Immunohistochemistry:



**Immunohistochemical analysis of paraffin-embedded human NSCLC tissue with anti-EGFR (L858R) monoclonal antibody (Cat. #26082).** Tissue samples were fixed with formaldehyde and blocked with 1% serum for 15 min at 37 °C. Antigen retrieval was by heat mediation in citrate buffer (pH6). Samples were then incubated with primary antibody (1:100) overnight at 4°C. A HRP-conjugated Goat anti-mouse IgG (dilution 1:50) was used as secondary antibody.